



TECHNICAL DATA BULLETIN

PRODUCT TECHNICAL INFORMATION AND APPLICATIONS

DIADEM[®] 600EC

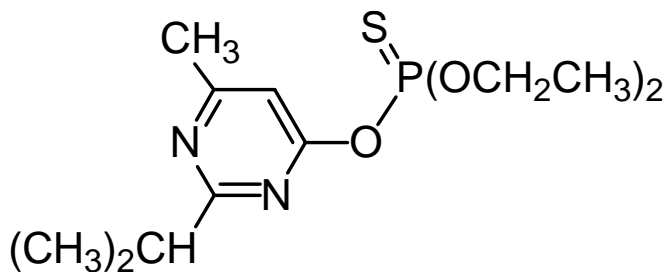
(Diazinon 600 g/L "EC")

1. GENERAL:

DIADEM[®] 600EC is a Public Health Insecticide in the form of an emulsifiable concentrate. It contains 600 g/L of the active ingredient **Diazinon**, which is an organophosphate insecticide with contact and stomach - poison activity, dissolved in the appropriate solvents with other necessary formulates.

2. ACTIVE INGREDIENT:

Common Name: **Diazinon**
Chemical Group: Organophosphorus Compound (Multipurpose)
Chemical Structure:



Molecular Formula: C₁₂ H₂₁ N₂ O₃ PS
Relative Molecular Mass: 304.3
CAS Registry Number: 333 – 41 – 5
Vapour Pressure: 1.2 X 10 mPa at 25°C



3. PHYSIOCHEMICAL PROPERTIES:

DIADEM[®]600EC conforms to WHO specification WHO/SIF/13.R6 approved on September 25, 1989.

Assay:	600 ± 25 g/L as Diazinon
Appearance:	Clear brown liquid free of visible impurities.
Odour:	Faint ester-like odour
Density:	1.0085 Kg/L at 20°C
Flash Point:	46°C
Water contents:	< 2.0 g/Kg
Acidity as H ₂ SO ₄ :	0.1 g/Kg

4. TOXICITY OF THE ACTIVE INGREDIENT:

Acute oral LD ₅₀ for rats	1,250 mg/Kg
Toxicity classification	WHO: II; EPA: II or III
Toxicity to Bees	Highly toxic to bees
ADI:	0.002 mg/Kg b.w.

5. MODE OF ACTION:

DIADEM[®]600EC contains the active ingredient Diazinon, which is a cholinesterase inhibitor, non-systemic broad spectrum insecticide and acaricide with contact, stomach and respiratory action.

DIADEM[®]600EC is a broad-spectrum insecticide. It has a good residual effect. It does not accumulate and it is readily biodegradable.

6. USES:

DIADEM[®]600EC is recommended for indoor and outdoor control of cockroaches, ants, silverfish, spiders, carpet beetles, scorpions, fleas, flies and mosquitoes.

DIADEM[®]600EC is also recommended for the control of insect pests in animal houses.



7. APPLICATION:

DIADEM[®]600EC is applied as a spray after dilution with water. The target pest, degree of infestation, surface to be treated and the prevailing climatic conditions determine the frequency of application and dosage rates. However, the standard concentrations for successful application are as follows:

Target Pest	Dilution Rate
Flies, Mosquitoes	100 ml product in 5.0 liters of water
Lice and Bed bug	100 ml product in 6.0 liters of water
Cockroaches	100 ml of product in 5.0 liters of water
Ants	100 ml in 6.0 liters of water

The above-mentioned concentrations may be increased depending on the pest infestation level. However, the maximum concentration should not be more than double the standard concentration.

10 liters of the spray liquid are used for treating an area of 100 m².

The spray liquid is applied using a small hand sprayer, manually operated knapsack sprayer or motorized sprayer.

8. PHYTOTOXICITY:

DIADEM[®]600EC is not phytotoxic when used according to recommendations. However, russetting may be caused on green and yellow varieties of apples and some ornamentals may be injured. **DIADEM[®]600EC** should not be applied on ferns, hibiscus, papaya or bella palm.

9. COMPATIBILITY:

DIADEM[®]600EC is compatible with other pesticides but incompatible with copper-containing compounds.



10. HANDLING, STORAGE AND TRANSPORTATION:

When handling **DIADEM**[®]600EC operation personnel should wear impermeable boots, clean overalls, appropriate gloves, hats and face - mask. All protective clothing should be washed immediately after use. Hands and other exposed skin should be washed before eating, drinking or smoking.

DIADEM[®]600EC should be transported and stored in clearly labeled rigid and leak-proof containers, away from containers of food, feed and drink. Storage should be under lock and key and secure from access by unauthorized persons and children.

11. AVAILABILITY AND PACKING:

- 500 ml and 1.0 Liter aluminum containers.
- 1.0; 5.0 and 10.0 liters Coextruded HDPE
- 20.0 and 25.0 liters mild steel drums

Sales and Export:

Astra Agricultural Company Ltd.,
P.O.Box 54061, Riyadh, 11514 - Kingdom Of Saudi Arabia
Tel: + 966 1 477 2346 Fax: + 966 1 478 2102