



## TECHNICAL DATA BULLETIN

### PRODUCT TECHNICAL INFORMATION AND APPLICATIONS

# **DINGO<sup>®</sup>25EC**

*Beta- Cyfluthrin 25 g/L "EC"*

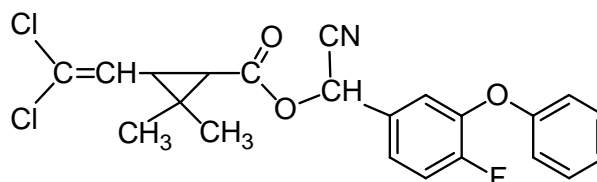
#### 1. INTRODUCTION:

**DINGO<sup>®</sup>25EC** is an emulsifiable concentrate formulation of the pyrethroid Beta-Cyfluthrin. It contains 25 g/L of the active ingredient. **DINGO 25EC** is used as an agricultural insecticide effective against many pests, especially Lepidoptera, Coleoptera, Homoptera and Hemiptera in cereals, cotton, fruit and vegetables; also against migratory locusts and grasshoppers. It has a rapid knockdown effect and long-lasting residual activity

#### 2. ACTIVE INGREDIENT PROPERTIES:

Common name	<b>Beta- Cyfluthrin</b>
Chemical Group	Pyrethroid
CAS Registry No.	68359-37-5
Molecular Formula	C <sub>22</sub> H <sub>18</sub> Cl <sub>2</sub> FNO <sub>3</sub>

Structural Formula



Molecular weight	434.3
Melting Point	(II) 81°C; (IV) 106°C
Vapour Pressure	(II) 1.4 10 <sup>-5</sup> mPa; (IV) 8.5 10 <sup>-5</sup> mPa (both 20 °C)
Density	1.34 g/cm <sup>3</sup> (22 °C)
Acute oral LD <sub>50</sub> , Rat	c.500 mg/kg



### 3. PHYSIOCHEMICAL PROPERTIES OF THE PRODUCT:

Product complies with **FAO** Specification 385/EC/S/F.

<b>Assay:</b>	<b>Beta-Cyfluthrin</b> 25 ± 3.75 g / L @ 20 °C
<b>Appearance:</b>	Clear yellow stable liquid, free from visible suspended matter and sediment
<b>Odor</b>	Slightly aromatic
<b>Density:</b>	0.892 ± 0.006 Kg / L
<b>Specific Gravity:</b>	0.89 @ 20°C
<b>Vapor Pressure:</b>	1 K Pa @ 20°C
<b>Flash point:</b>	> 40°C (MT 12, CIPAC F, p.31)
<b>Acidity (Maximum):</b>	3.0 g/kg as H <sub>2</sub> SO <sub>4</sub> (MT 31.1, CIPAC F, p.96)
<b>Alkalinity (Maximum):</b>	0.1 g/kg as NaOH (MT 31.1, CIPAC F, p.96)
<b>Water content:</b>	Maximum: 3.0 g/kg (MT 30.1, CIPAC F, p.91)
<b>Solubility:</b>	Forms an emulsion in water

#### **Emulsion stability and re-emulsification** (MT 36.1.1, CIPAC F, p.108 \*)

After the heat stability test the product 5% v/v, when diluted @ 30°C with CIPAC Standard Water D, complied with the following:

<u>Time after dilution</u>	<u>Specifications</u>	<u>Test Results</u>
0 h	Initial emulsification: complete	Comply
0.5 h	"Cream", maximum: 1ml	Nil
2.0 h	"Cream", maximum: 2 ml "Free oil", maximum 0 ml	< 2.0 ml / L Nil
24 h	Re-emulsification: complete	Comply
24.5 h	"Cream", maximum: 1 ml "Free oil", maximum: 0 ml	Nil Nil

#### **Storage Stability**

Stability at 0°C (MT 39.1, CIPAC F, p.128)

After storage at 0 ± 1°C for 7 days, the volume of the solid and/or liquid which separates is less than 0.3 ml.

Stability at 54°C (MT 46.1.3, CIPAC F, p.150)

After storage at 54 ± 2°C for 14 days \*\*, the determined average active ingredient content is more than 98% relative to the determined average content found before storage \*\* and the product continue to comply with 4.1 and 4.2.

\* Test is carried out after the heat stability test.

\*\* Samples of the product taken before and after the storage stability test were analyzed together after the test to reduce the analytical error.



#### 4. MODE OF ACTION:

**Dingo 25EC** is a non-systemic insecticide with contact and stomach action. Acts on the nervous system, with rapid knockdown and long residual activity.

#### 5. USES:

**Dingo 25EC** is an insecticide effective against Lepidoptera, Coleoptera, Hemiptera and Homoptera on cotton, fruit, vegetables, cereals and other crops, at 7.5-20 g/ha. Also against migratory locusts and grasshoppers, and in animal health

#### 6. APPLICATION:

##### Recommendations for use

Crops	Pests	Application Rate	PHI
<b>Vegetables</b>	Fruit worm, caterpillars and other insects	0.3 – 0.5 L/ha	7 days
<b>Potatoes</b>	Leafhoppers, Beetles, Potato tuber moth, aphids and others	0.5 L / ha	
<b>Wheat and Barley</b>	Aphids and other insects	0.3 L / ha	
<b>Citrus</b>	Citrus leafminer, caterpillars, moths		14 days
<b>Fruit Trees</b>	Fruit fly, codling moth, weevils, caterpillars, Psylla, aphids and others	30 – 50 ml / 100 L of water	

#### 7. AVAILABILITY AND PACKING

The product is currently available in 0.5, 1, 5 and 10 liter containers.

#### 8. HANDLING, STORAGE AND TRANSPORTATION

Dingo 25EC should be transported its original labeled, tightly closed container and stored in a dry well ventilated store at room temperature and away from direct sunlight. It should also be kept away from children, animals, food, feed and drinks and unauthorized personnel. Personnel involved in handling this material should wear protective gloves, clean protective clothing and a facemask.