



TECHNICAL DATA BULLETIN

PRODUCT TECHNICAL INFORMATION AND APPLICATIONS

TRAX[®] 25EC

"LAMBDA-CYHALOTHRIN 25 g/L EC"

1. INTRODUCTION:

Trax[®]25EC is a Public Health Insecticide emulsifiable concentrate formulation containing 25 g / L of lambda-Cyhalothrin. It is used for the control of crawling and flying insect pests in public health. Catalogue

2. ACTIVE INGREDIENT:

Common name

Lambda-Cyhalothrin

Chemical Group

Pyrethriod

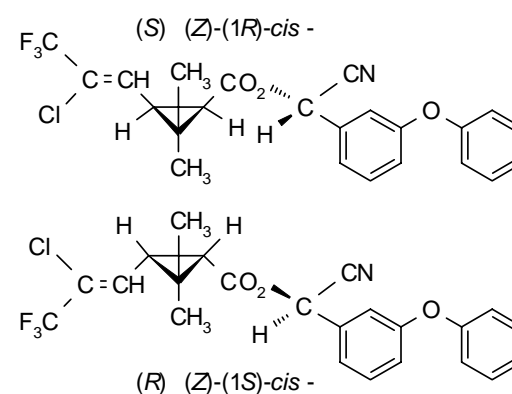
CAS Registry No.

91465-08-6

Molecular Formula

C₂₃ H₁₉ Cl F₃ NO₃

Structural Formula



Molecular weight

449.9

Vapour Pressure

2x10⁻⁴ mPa @20°C

K_{ow} log P

7 @ 20°C

Acute oral LD₅₀, Male rat

79 mg/kg



3. PHYSIOCHEMICAL PROPERTIES OF THE PRODUCT:

| | |
|---|--|
| Assay: | Lambda - Cyhalothrin 25.0 g/L |
| Appearance | Clear yellow liquid free of visible impurities |
| Odour | Slight aromatic |
| Density | 0.9098 |
| Flash Point | 41.9°C |
| Water contents | 1.07 g/Kg |
| Acidity as H ₂ SO ₄ | 0.05 g/Kg |
| Solubility in water | form emulsion |

4. MODE OF ACTION:

Trax[®]25EC is a fast acting non-systemic insecticide with contact and stomach action. It has a long residual activity

5. USES:

Trax[®]25EC is used for the control of crawling insects, mosquitoes and flies in public health.

6. COMPATIBILITY:

Trax[®]25EC is compatible with other pesticides. However, small mixture should be made and tried before mixing large quantities.

7. APPLICATION:

Trax[®]25EC is applied as surface residual spray, ULV spray of thermal fogging. The product is applied after being diluted with water or a suitable carrier such as C-Deck, Diesel oil or Kerosene.



The following table can be used as a guide for the application of **Trax[®]25EC**

| Application technique | Targeted Pest | Dilution | Application Rate |
|------------------------|----------------------|-----------------|---|
| Residual surface spray | Crawling insects | 1 : 50 | 40 ml / m ² |
| Thermal Fogging | Mosquitoes | 1 : 125 | 5 L / ha |
| | Housefly | 1 : 60 | |
| Knapsack sprayers | Mosquitoes | 1 : 50 | 2 L / ha |
| | Housefly | 1 : 24 | Pour on |
| | Sewage lines | | |
| Ultra low volume | Mosquitoes and flies | 1 : 11 | 0.5 L / ha |
| Flies larvae | Houseflies | 1 : 200 | 100 ml / m ² |
| Water swamps | Mosquitoes larvae | 1 : 250 (water) | 10 ml / m ² |
| Mosquito nets | Cotton | 1 : 29 (water) | Sock well and dry on a flat surface away from direct sunlight |
| | Polyester | 1 : 14 (water) | |

8. HANDLING, STORAGE AND TRANSPORTATION:

Trax[®]25EC should be transported its original labeled, tightly closed container and stored in a dry well ventilated store at room temperature and away from direct sunlight. It should also be kept away from children, animals, food, feed and drinks and unauthorized personnel. Personnel involved in handling this material should wear protective gloves, clean protective clothing and a facemask.